

GERBER HOMES

NEW

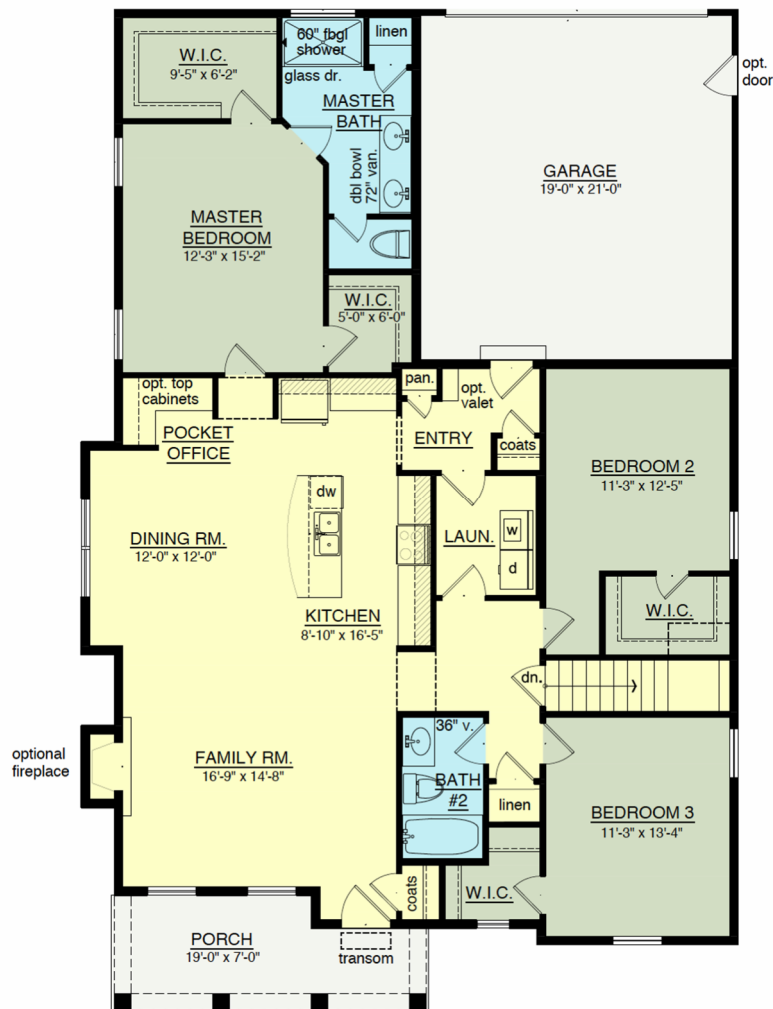


THE IVY COTTAGE

1730 Sq. Ft.

W- 36'-0"

D- 61'-0"



This sheet is for illustrative purposes only and is not part of a legal contract. Dimensions shown are approximate and may vary from completed structure.

THE IVY BY GERBER HOMES

A masterfully designed single-story home, The Ivy has 3 bedrooms, 2 baths, and is part of our new Cottage series. It features innovative use of space, including a combined family room, dining room, and kitchen. The Ivy has a lovely master suite, featuring a private bath and 2 spacious walk-in closets. This home also has a rear-load 2-car garage and a covered front porch.

Gerber
HOMES

1260 RIDGE ROAD

ONTARIO, NY 14519

315-524-7890

GERBERHOMES.COM



Illustrations are artist's concepts. Actual colors may vary. Builder reserves the right to modify floor plans, elevations, colors and materials without notice. All dimensions and features are approximate and are subject to field variation and/or change without notice. If any discrepancy arises between these plans and the architect's plans, the architect's plans shall prevail.



COTTAGE ELEVATION

THE IVY

OUTSTANDING
FEATURES

- 1-story (Ranch)
- 1,730 Square Feet
- 3 Bedrooms
- 2 Baths
- Rear-load 2-car Garage
- Covered Front Porch

FREQUENTLY
REQUESTED
OPTIONS

- Carriage-style Garage Door with Windows
- Railings on Front Porch
- Stone on Return Walls



TRADITIONAL ELEVATION

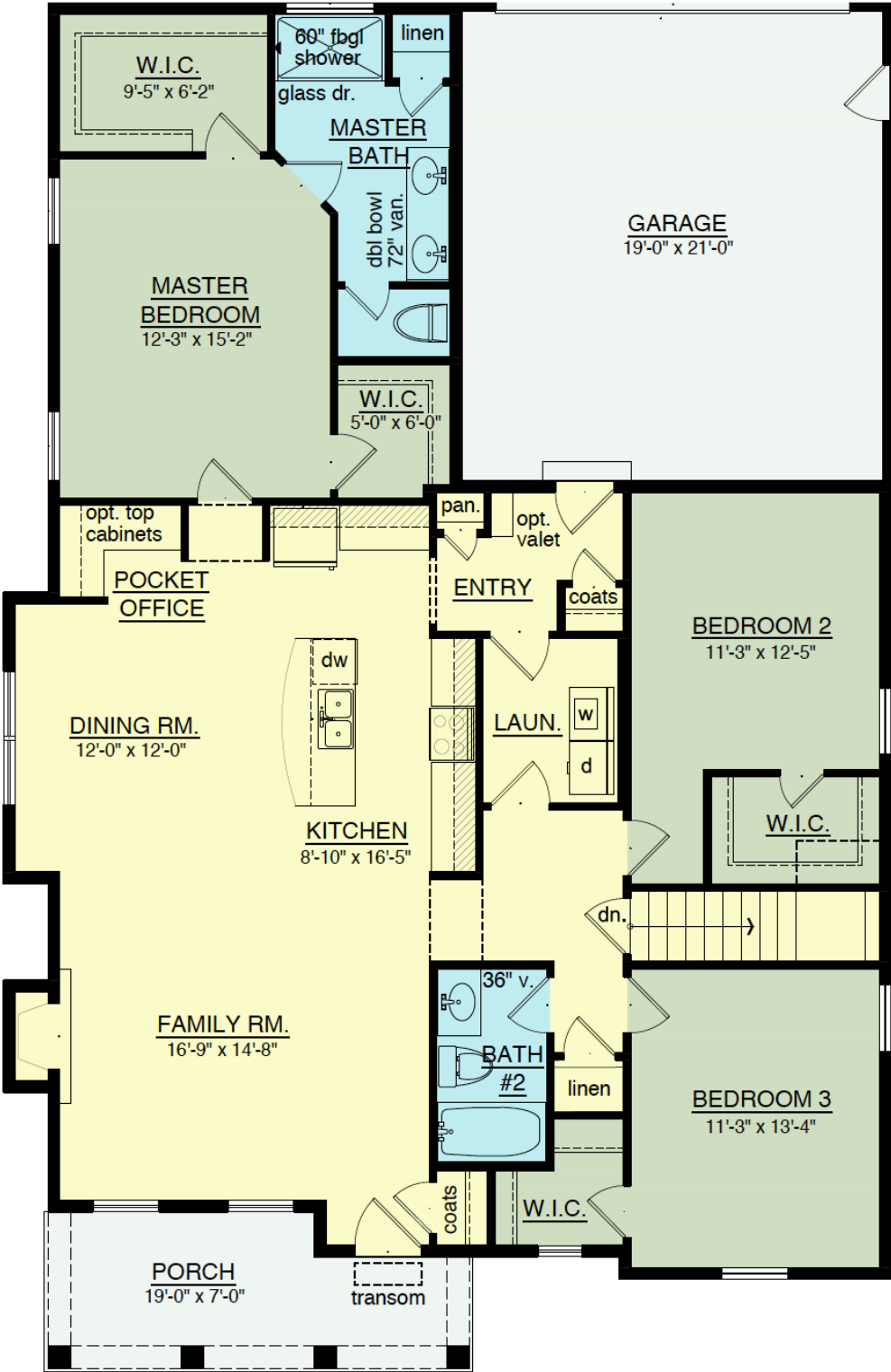


CRAFTSMAN ELEVATION





THE IVY



ARTS & CRAFTS
BEDROOM #3



LAKE COTTAGE
BEDROOM #3